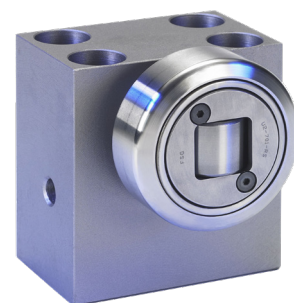
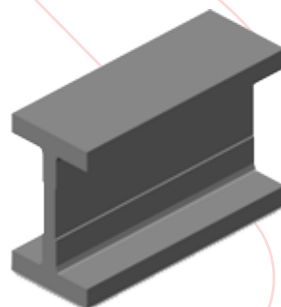
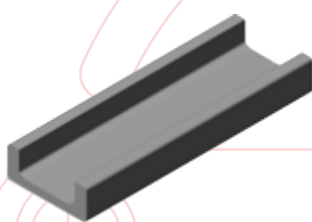
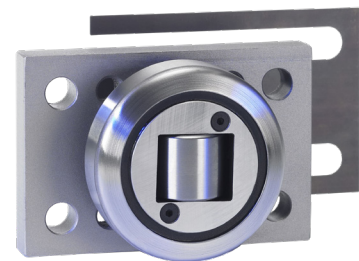
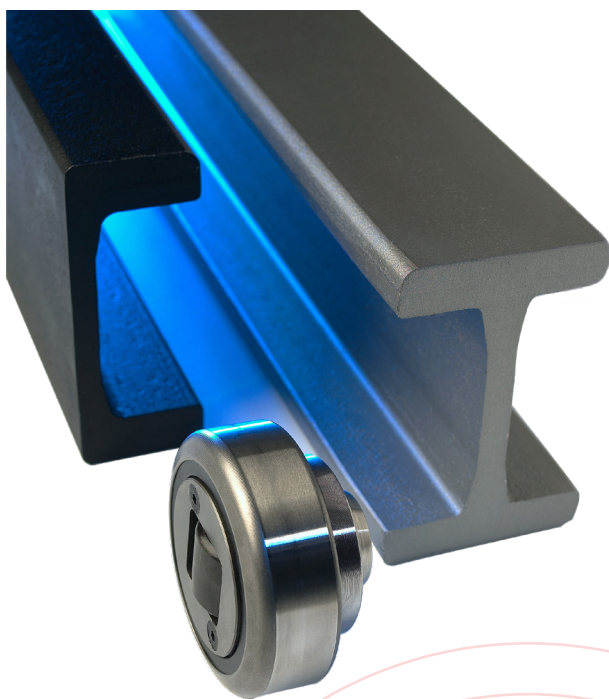




partner of

**FSG**  
 GmbH & Co.KG

Les galets combinés et profilés de guidage FS-G sont la solution économique dans des applications lourdes et de fortes charges. Les coûts de conception et de production sont réduits; les galets combinés peuvent reprendre des charges radiales et axiales élevées.


[www.vermeire-motion.com](http://www.vermeire-motion.com)

VERMEIRE TRANSMISSIONS SA  
 Rue de la Filature, 41  
 B-4800 ENSIVAL (VERVIERS)  
 T +32 (0)87 32 23 61

VERMEIRE AANDRIJVINGEN NV  
 Gaston Crommenlaan 8  
 B-9050 GENT  
 T +32 (0)9 216 80 80

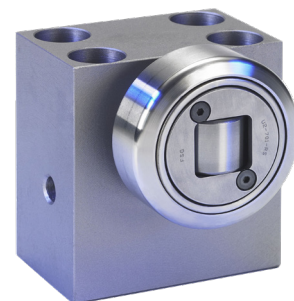
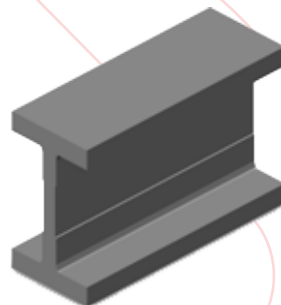
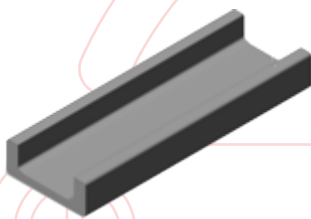
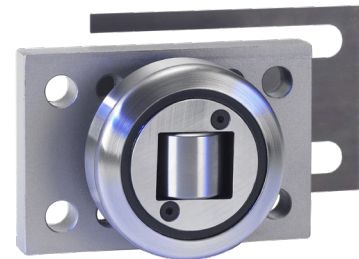
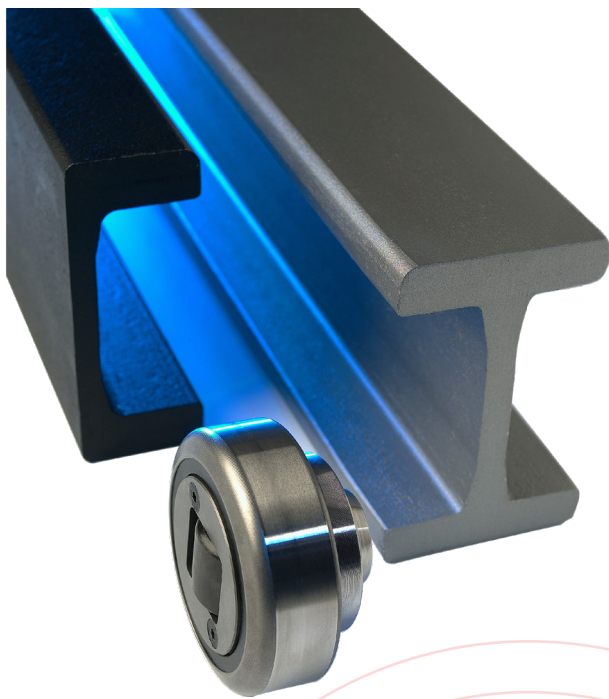




partner of



De FS-G combirollen en geleiding profielen zijn een economische oplossing voor zware toepassing met hoge belastingen. De ontwerp- en productie kosten zijn beperkt; de rollen kunnen hoge radiale en axiale belastingen aanvaarden.



[www.vermeire-motion.com](http://www.vermeire-motion.com)

VERMEIRE TRANSMISSIONS SA  
Rue de la Filature, 41  
B-4800 ENSIVAL (VERVIERS)  
T +32 (0)87 32 23 61

VERMEIRE AANDRIJVINGEN NV  
Gaston Crommenlaan 8  
B-9050 GENT  
T +32 (0)9 216 80 80

